

PRODUCT DATA SHEET

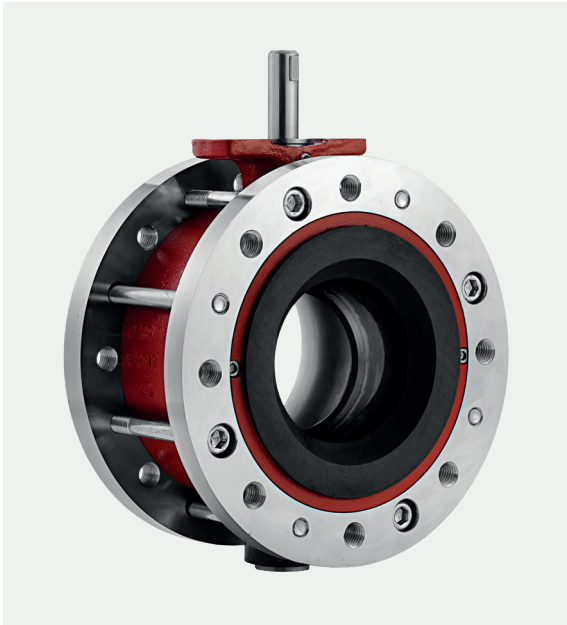
Ramén Ball Sector Valve Type KSG/KSGF



Ramén Valves

We know the flow

DN 80-200 | Wafer/Flanged | PN 10 | Ductile Iron | Rubber/PUR



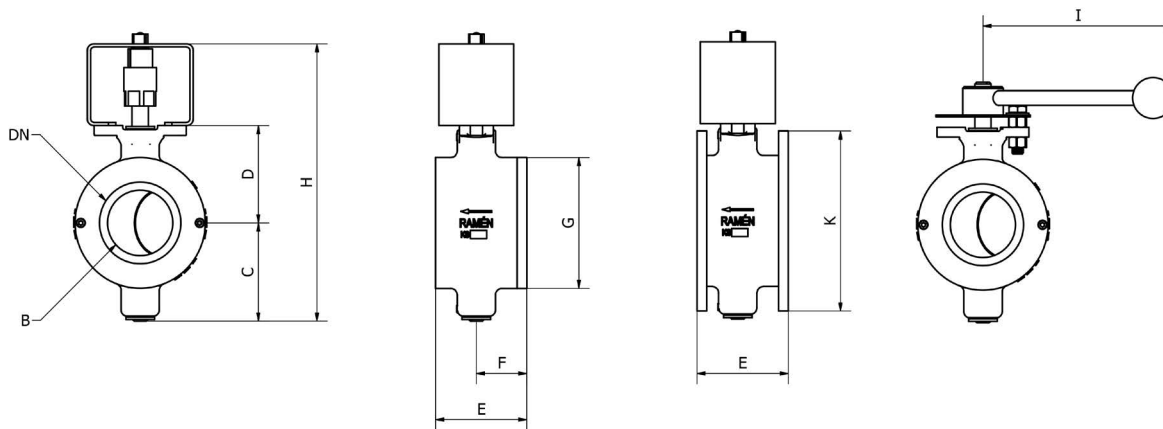
The Ramén KSG Ball Sector Valve is a rubber lined control valve that offers extended resistance to wear in various industrial applications containing abrasive particles.

All wetted parts (body, ball sector and the outlet protection ring) are lined with polyurethane (PUR) and natural rubber (NR), making particles bounce off rather than, in the case of using metal parts, cause substantial wearing.

Typical applications

- Cement mixture in silos and hoppers
- Sand pumping
- Crushers and separators, slurry mixing
- Iron ore dressing plants
- Industrial and municipal waste

Technical information		
Design		KSG: wafertype
Nominal sizes		DN 80 - DN 200, 3"-8"
Material	Body	EN GJS-400-15 A53660-40-18
	Lining body	Elathane®(PUR)
	Shafts	EN 1.4460, AISI 329
	Ball Sector	EN GJS-400-15 A53660-40-18
	Lining ball sector	Natural rubber (NR) + Butadiene Rubber (BR)
	Seat	Elathane® (PUR)
	O-rings	Nitrile
	Bearing	Rulon®
Working pressure		Max. 5 bar (g)
Operating temperature		Max. 60°C Max. 140°F
Characteristic		Equal percentage
Rangeability		Up to 100:1

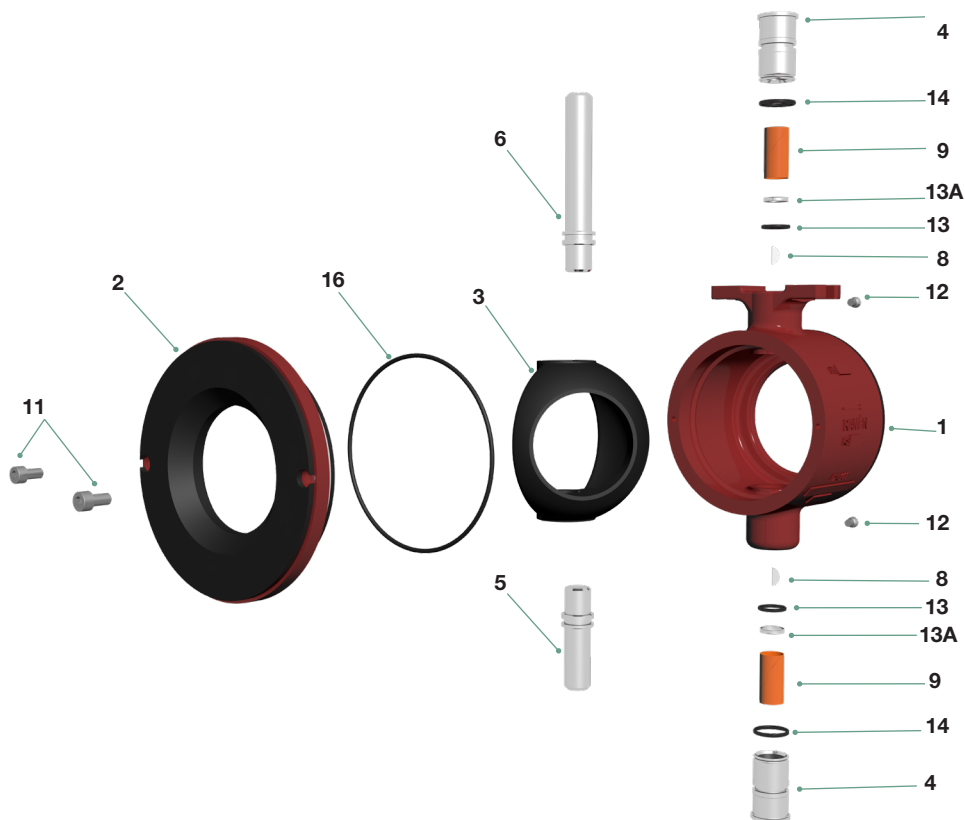


Dimensions					
DN	80	100	125	150	200
B Bore [mm]	60	75	93	110	145
C [mm]	107	118	135	167	188
D [mm]	108	119	140	162	190
E [mm]	98	118	145	180	215
F [mm]	55	62	78	95	120
G [mm]	140	160	190	220	274
H [mm]	315	337	375	454	503
I [mm]	290	290	370	370	370
K [mm]	200	220	250	285	340
Weight [kg]	6,5	9	11	23	35
Top mounting flange* EN-ISO 5211	D17/22 F07/F10	D17/22 F07/F10	D17/D22 F07/F10	D22/27 F10/F12	D22/D27 F10/F12

* D refers to diagonal square size & F refers to hole pattern.

Technical specifications					
DN	80	100	125	150	200
Kvs _v [m ³ /h]	200	345	530	680	1200
C _v [gpm]	260	405	620	800	1400
Actuator torque [Nm] Recommended* Max.	80-200	160-400	160-400	80-200	80-200
	200	400	400	200	200
Rotation angle	0°-90°	0°-90°	0°-90°	0°-90°	0°-90°

* The lower value of the torque range can be used for on-off applications for clean media at normal temperatures. The higher value of the torque range shall be used for pneumatic actuators with positioner when high control accuracy is needed or for dirty/sticky media.



Qty of each part, valve sizes DN80-200						
Item No	80/3"	100/4"	125/5"	150/6"	200/8"	Description
1	1	1	1	1	1	Valve body
2	1	1	1	1	1	Outlet ring w. rubber seat
3	1	1	1	1	1	Ball Sector
4		2			2	Shaft bearing SST
5		1			1	Short Shaft
6S/L		1			1	Drive Shaft, (short=S, long =L)
8		3			3	Woodruff Key
9		2			2	Shaft bearing, PTFE
11		2		2	2	Screw for outlet ring
12		2				Screw for bearing sleeve (4)
13		2			2	O-ring for shafts, nitrile (std)
13A		2			2	Sliding ring, PTFE
14		2			2	O-ring for bearing sleeve, nitrile (std)
16	1	1	1	1	1	Viton® (FKM)

YOUR CONTACT FOR THE NETHERLANDS:

Binder Engineering B.V
 Cort van der Lindenstraat 25
 2288 EV Rijswijk
 Tel. 070-307.4300
 sales@binder-engineering.nl
 www.binder-engineering.nl

